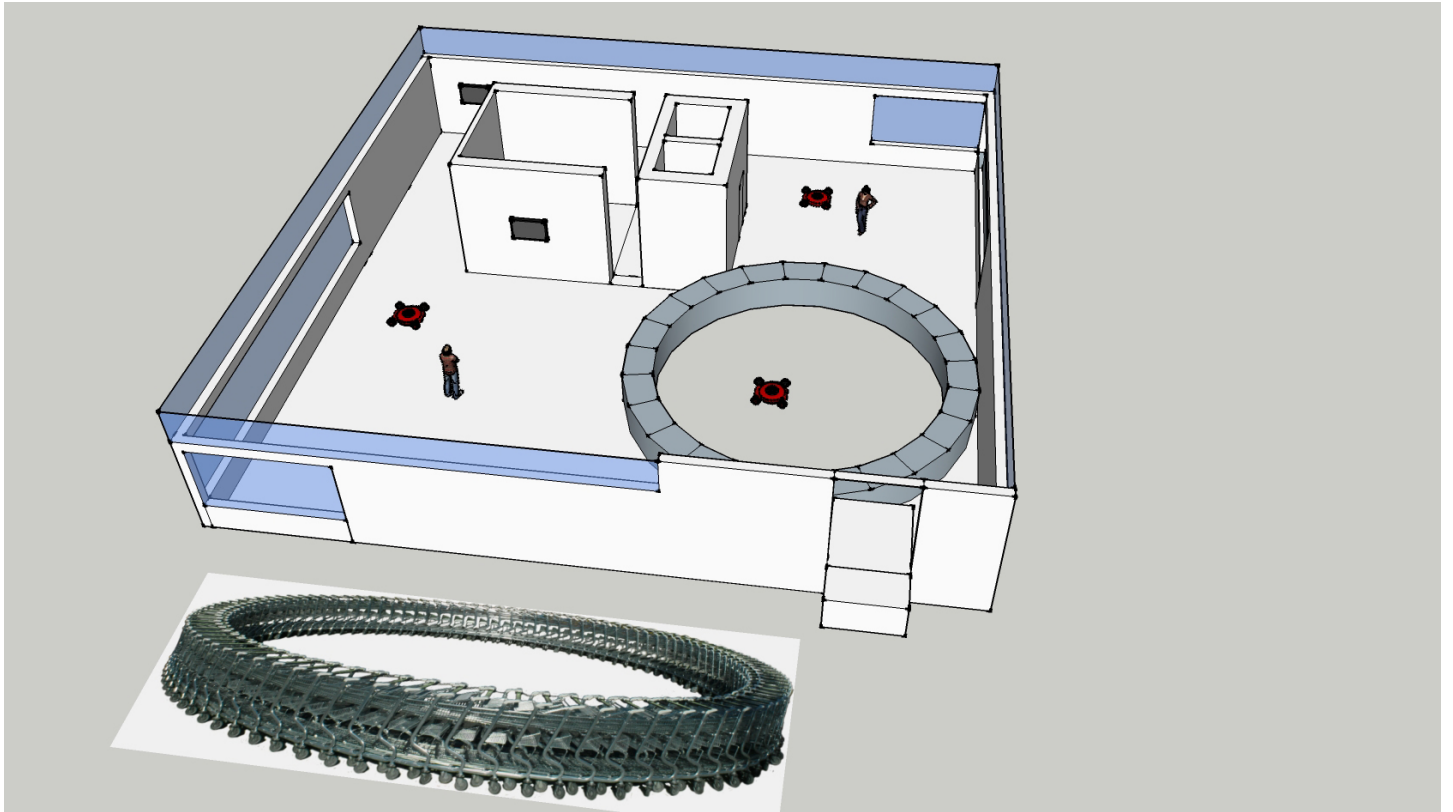


Eberhard Bosslet



| | |
|-------------------|--|
| Title | Closed Circuit Commerce - extended version |
| Year | 2012 |
| Materials | Electronic steering, Steel, galvanized, Synthetic Material, Video Camera |
| Dimensions | 4x20x20m |
| Category | 02. SCULPTURE, 18. Projects, Proposals, Concepts |
| Showned at | |
| Photographer | |
| Copyright | BOSSLET at VG-Bild/Kunst, Bonn, Germany |
| Series | 1999 - CIRCLES |
| Location | |
| Solo Show | 2012 Eberhard Bosslet, Dingsda, Saarland.Museum, Saarbrücken, D, Curator, Mainrad Maria Grewenig |
| Group Shows | |
| Cities | |
| Producer/Supplier | |
| Gallery | |
| Price Category | 00 NO |