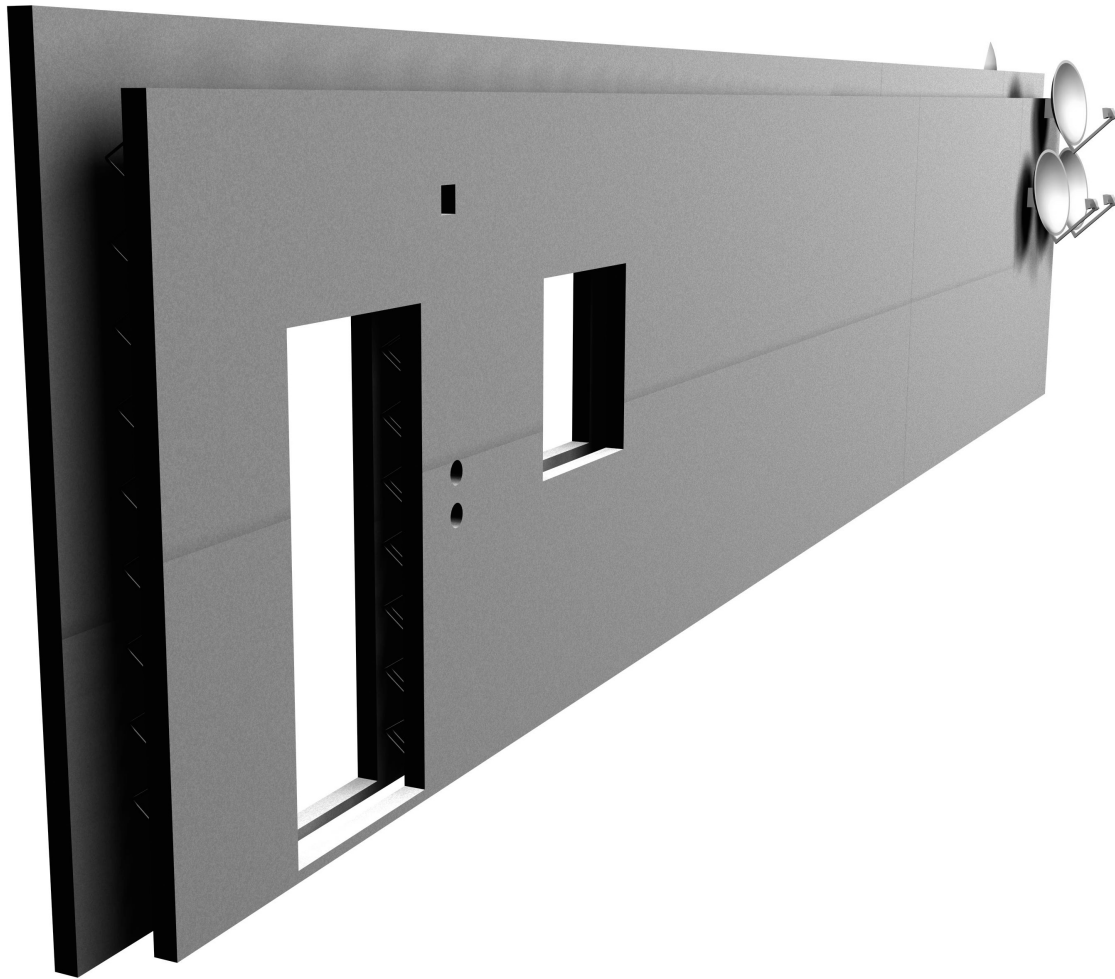


Eberhard Bosslet



Betonwand mit Parabolantennen
l = ca. 15 m h = ca. 3 m

Bosslet 1999

| | |
|-------------------|--|
| Title | Autist BAB9 - Wand |
| Year | 1999 |
| Materials | Concrete, Steel, coated |
| Dimensions | HxBxT= 3x15x1 m |
| Category | 18. Projects, Proposals, Concepts |
| Showed at | Kunstflug e.V., Baitz, D |
| Photographer | |
| Copyright | BOSSLET at VG-Bild/Kunst, Bonn, Germany |
| Series | |
| Location | Brück/Linthe, near Exit Motorway BAB 9 , D |
| Solo Show | |
| Group Shows | 1999 AREALE 99, Kunst im industriellen Sektor, Linthe, Kunstflug e.V., (Katalog),D, Curator Susken Rosental |
| Cities | Brück/Linthe, Germany |
| Producer/Supplier | |
| Gallery | |
| Price Category | on request |

